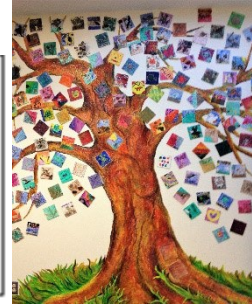


LADY GREY ELEMENTARY SCHOOL

I Learn, I Lead, We Succeed



<https://lges.sd6.bc.ca/>

Phone: 250-344-6317

Box 899

Golden. B.C., V0A 1H0

Code of Conduct

The purpose of this **Code of Conduct** is to help set and maintain a safe, caring and orderly environment for purposeful learning and to direct students toward responsible respectful behavior. Our school wide expectations apply to behavior at school, to and from school and at school-organized events, as well as to behavior beyond these times that negatively impacts the school environment.

Lady Grey Elementary School upholds and promotes the values expressed in the **BC Human Rights Code** respecting the rights of all individuals in accordance with the law – prohibiting discrimination based on race, colour, ancestry, place of origin, religion, marital status, family status, physical or mental disability, gender, sex, sexual orientation, gender identity or expression, or age of that person or class of persons in its school environment.

Technology

At Lady Grey all cell phones, Smart Watches, iPad's or other tablets (unless permitted specifically for health tools or students IEP), must be turned off and placed in back pack during school hours (8:20am-3:06pm inclusively). If a student is deemed to be contravening the technology rules, the device will remain with the teacher or the administration for the remainder of the day, or until a parent or guardian can come and pick it up.

Schools are not responsible for any misplaced, lost, stolen, or broken items brought to school by students.

Dress Code

It is expected that students dress in a manner functional and appropriate for a professional workplace. Clothing that has inappropriate slogans, is too revealing or shows undergarments is not acceptable.

Appropriate Behaviours

Appropriate behaviour can consist of, but is not limited to:

- Polite language
- Complying with adult requests
- Respectful words and actions
- Supportive of self and others
- Hands and feet to self
- Respect for personal and school property
- Moving safely at all times
- Following school expectations – such as: entering your designated wing, removing outdoor footwear, going outside during breaks
- Seeking adult help when there is conflict

Inappropriate Behavior

Inappropriate behaviour can consist of, but is not limited to:

- Interfering with the learning of others
- Creating unsafe conditions
- Using unkind language
- Bullying and Cyberbullying behaviors
- Threatening or violent behaviors
- Retribution against someone reporting inappropriate behavior

Consequences

When appropriate behaviors are not occurring, consequences will be applied in a fair and consistent manner, respecting individual rights, responsibilities, age, maturity; and be **restorative** rather than punitive in nature. As students enter the upper intermediate grades, it is expected that there will be an increase in personal responsibility; therefore, there will be corresponding consequences.

In accordance with the School District 6 Policy 5800, Lady Grey recognizes that: *Special considerations may apply to students with special needs if these students are unable to comply with a code of conduct due to having a disability of an intellectual, physical, sensory, emotional or behavioural nature.*

When these conditions occur repeatedly, the student may be referred to the school- based team and plans for responding to the behaviors will be developed. Students on a response plan may have specific steps that correspond with unsafe behaviors. These will be kept confidential as they are carried out by the school.

Inappropriate behaviours typically result in the following consequences:

- review of the expectations and a timeout
- review of the expectations, written assignment and/or loss of privileges
- office visit where student is required to document the events and plan restorative action (how do we make it right?)
- parents are notified

Students involved in major infractions (i.e. smoking, fighting, drugs, alcohol, vandalism, overt or repeated defiance) will be dealt with by the administration. Parents will be contacted and informed of the disciplinary procedures. The RCMP will be contacted if the incident is against the law.